



# BEN

Semi adjustable budget rehab-stroller



- Budget solution for children with mild postural needs
- 5 sizes MINI, STD, MAXI, SUPER MAXI 42 and 45 ( up to 75 kg)



# variants

Xcountry  
Plus

Robust simpler mobility solution for children with mild postural needs. Durable undercarriage with ergonomically shaped handle along with 5 seat-sizes (MINI, Standard, MAXI, SuperMaxi 42 and 45) are the base for the standard line of rehab strollers. Undercarriage is reinforced and optimized for heavy duty usage. The seat reclines to lie flat with the fully angle and height adjustable footrest, can be adjusted to three angle positions and is covered by fully detachable soft padded upholstery. Easy handling is ensured by the stroller's fully and very compact foldable frame.

## Seating and Positioning

---



height adjustable  
footplate



angle adjustable  
handlebar



folds as one



# sizes and patterns

sizes



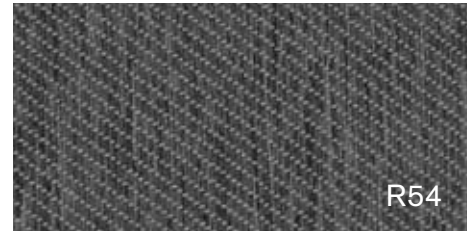
SM45

SM42

MAXI

STD

MINI



R54

Slate grey



R55

Denim blue



R56

Pea green




R57

Antik pink

## indicative size guide

height of the user


|   | MINI      | STD        | MAXI       | SM42       | SM45       |
|---|-----------|------------|------------|------------|------------|
|  | 85-105 cm | 100-125 cm | 110-145 cm | 110-145 cm | 120-165 cm |



R58

Papaya orange

maximum user weight

|   | MINI    | STD     | MAXI    | SM42    | SM45    |
|---|---------|---------|---------|---------|---------|
|  | 40,0 kg | 40,0 kg | 50,0 kg | 75,0 kg | 75,0 kg |



R59

Ruby red

# colour range

---



Slate grey



Denim blue



Pea green



Antik pink



Papaya orange



Ruby red

# accessories

---

## Optional equipment:

- canopy, rain cover
- headrest, 4-point immo.belt, abduction block
- work board
- basket
- and other equipment according to the actual list



# BEN Xcountry

Semi adjustable cross-country budget rehab-stroller



Xcountry



- BIG cross-country wheels for outdoor adventure
- Available only in size SuperMaxi 42 and 45
- reclines to lie flat
- lightweight steel frame
- moderate support

# specification

## Standard equipment:

- non size-adjustable seat with fully detachable soft padded textile upholstery
- fully reclining backrest
- seat with tilt-in space function (3 positions)
- height variations for attaching of the fixation devices and accessories
- angle and height adjustable footrest
- 200/400 mm wheels
- detachable grab bar with cover
- frame color and fabric patterns according to the current offer
- height adjustable ergonomic handlebar

## order codes

| Products                   |           |
|----------------------------|-----------|
| BEN Xcountry SuperMaxi 42: | B4X42RP00 |
| BEN Xcountry SuperMaxi 45: | B4X45RP00 |



|                             | SM42           | SM45           |
|-----------------------------|----------------|----------------|
| Seat width [mm]             | 320/step/420   | 350/step/450   |
| Seat depth [mm]             | 370            | 460            |
| Backrest height [mm]        | 710            | 840            |
| Seat to footplate [mm]      | 230-400        | 240-460        |
| Seat angle                  | +18°/step/+27° | +20°/step/+30° |
| Backrest angle              | 90° - 155°     | 90° - 155°     |
| Weight                      | 21,0 kg        | 27,0 kg        |
| Maximum load                | 75,0 kg        | 75,0 kg        |
| Total length [mm]           | 860            | 940            |
| Total width [mm]            | 670            | 690            |
| Total height [mm]           | 1130           | 1250           |
| Brake                       | foot oper.     | foot oper.     |
| Folded stroller length [mm] | 1000           | 1100           |
| Folded stroller width [mm]  | 670            | 700            |
| Folded stroller height [mm] | 460            | 530            |

# BEN Plus

Semi adjustable budget rehab-stroller



Plus



- reclines to lie flat
- lightweight steel frame
- 5 sizes
- moderate support

# specification

## Standard equipment:

- non size-adjustable seat with fully detachable soft padded textile upholstery
- fully reclining backrest
- seat with tilt-in space function (3 positions)
- height variations for attaching of the fixation devices and accessories
- angle and height adjustable footrest
- 175/265 mm wheels
- detachable grab bar with cover
- frame color and fabric patterns according to the current offer
- height adjustable ergonomic handlebar

## order codes

| Products               |           |
|------------------------|-----------|
| BEN Plus MINI:         | B4P30RP00 |
| BEN Plus STD:          | B4P34RP00 |
| BEN Plus MAXI:         | B4P38RP00 |
| BEN Plus SuperMaxi 42: | B4P42RP00 |
| BEN Plus SuperMaxi 45: | B4P45RP00 |



folded stroller

|                             | MINI          | STD           | MAXI          | SM42          | SM45          |
|-----------------------------|---------------|---------------|---------------|---------------|---------------|
| Seat width [mm]             | 200/step/300  | 240/step/340  | 280/step/380  | 320/step/420  | 350/step/450  |
| Seat depth [mm]             | 220           | 290           | 370           | 370           | 460           |
| Backrest height [mm]        | 540           | 640           | 710           | 710           | 840           |
| Seat to footplate [mm]      | 140-280       | 200-330       | 230-400       | 230-400       | 240-460       |
| Seat angle                  | +19/step/+27° | +20/step/+28° | +19/step/+27° | +18/step/+27° | +20/step/+30° |
| Backrest angle              | 90° - 160°    | 90° - 160°    | 90° - 155°    | 90° - 155°    | 90° - 155°    |
| Weight                      | 15,3 kg       | 16,0 kg       | 17,0 kg       | 21,0 kg       | 27,0 kg       |
| Maximum load                | 40,0 kg       | 40,0 kg       | 50,0 kg       | 75,0 kg       | 75,0 kg       |
| Total length [mm]           | 860           | 860           | 860           | 860           | 940           |
| Total width [mm]            | 580           | 580           | 620           | 670           | 695           |
| Total height [mm]           | 950           | 1050          | 1130          | 1110          | 1250          |
| Brake                       | foot oper.    | foot oper.    | foot oper.    | foot oper.    | foot oper.    |
| Folded stroller length [mm] | 1000          | 1000          | 1000          | 1000          | 1100          |
| Folded stroller width [mm]  | 580           | 580           | 620           | 670           | 695           |
| Folded stroller height [mm] | 400           | 400           | 400           | 410           | 480           |