



100 - 150 cm
39.4" - 59.1"
15 - 50 kg
33.1 - 110.2 lbs

NEW

RECARO AXION 1 REHA

Are you ready for the next level?

RECARO AXION 1 Reha



Strong together for the safety of your child

For over 35 years, Thomashilfen has been working with renowned partners such as RECARO to develop rehab car seats that offer optimum protection for children with special needs. These many years of experience are incorporated into the design of our products to ensure maximum functionality, comfort and safety.

RECARO stands for innovative safety technology and quality that regularly exceeds legal standards and convinces parents worldwide. Our common mission: To ensure the safety and well-being of your child at all times.



Thomashilfen has been supplying special children with rehab car seats for over 35 years. Today, we also use our expertise to develop our own rehab car seats. They incorporate all our many years of experience in meeting the needs of children and parents.

Gunnar Thomas, owner



Thomashilfen has the world's largest range of rehab car seats and offers the right support for all ages and disabilities.

Unique mobility:

Uniquely flexible, the RECARO AXION 1 Reha adapts to each child's individual needs. It enhances mobility and perception while ensuring maximum safety every day.



**LIGHTWEIGHT
AT ONLY 6 KG**

- **Sound System:** Speakers in the side panels with connector for audiobooks / music.
- **Lateral trunk support:** The angle can be optimally adapted to the child's body shape. Continuously adjustable.
- **Chin rest / Forehead support:** Stabilizes the head during lateral or forward movement



RECARO AXION 1 Reha

Original
RECARO
i-Size booster seat
100cm - 150cm
E₁
040135
UN-Regulation No. 129/04
AXION 1 Reha
Restraint system for
special requirements „S“
S
Proof of strength by
crash test in accordance to
ECE R129/04
Thomashilfen
Walkmühlenstraße 1
27432 Bremervörde
Germany



The basic rehab configuration can optionally be equipped with suitable swivel base and tilting base



The **SWIVEL BASE** and **TILTING BASE** can be supplemented with a wide range of accessories if required. The release lever is conveniently located on the side of the swivel base for easy handling. It can be ordered for right or left-hand rotation.

- 1 ERGONOMIC HEADREST**
Offers optimum neck support. It can be adjusted to the child's current size in seconds.
- 2 SOUND SYSTEM**
In the side panels - so that the speaker magnet is not too close to the head. *The use of hearing aids or implants is safe.*
- 3 LATERAL TRUNK SUPPORT**
Lateral trunk pads can be velcroed precisely to the large velour upholstery for better upper body support without restricting the user's freedom of movement. The angle lateral trunk support (Accessoires) is continuously adjustable.
- 4 ABDUCTION BLOCK**
Removable abduction block for a good sitting position, prevents the legs from rolling over
- 5 ISOFIX-CONNECTORS**
Quick and easy installation. Safety indicator in green/red for correct anchoring.
- 6 NEW ACCESSORIES**
Chin rest
Forehead support
... for head stabilization.

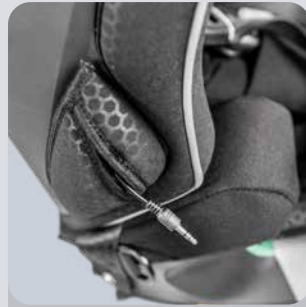
User height
100 - 150 cm
39.4 - 59.1"

User weight
15 - 50 kg
33.1 - 110.2 lbs

GMFCS
Level
III-V

RECARO AXION 1 REHA

Functions (selection)



SOUND SYSTEM

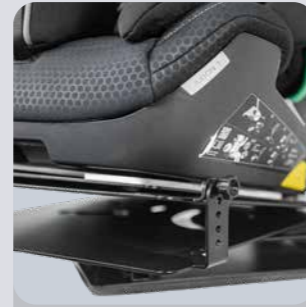
in the side panels — so that the speaker magnet is not too close to the head.

The use of hearing aids or implants is safe.



LATERAL TRUNK SUPPORT

The angle lateral trunk support can be optimally adapted to the child's body shape. Continuously adjustable.



TILTING AND SWIVEL BASE

combined for the best possible handling and comfort.



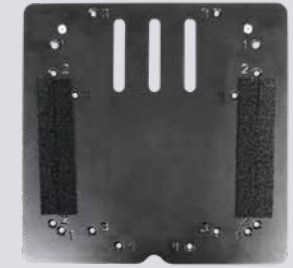
HEADREST

easily and quickly height-adjustable. Grows step by step with the child.



- The innovative high-tech base expands the car seat with a variety of functions, such as a swivel base, a tilt base, or a combination of both. This flexibility enables easy adjustment and increases comfort and safety for the child significantly.

HIGH-TECH COMBINATION



ADAPTER PLATE - is ALWAYS required for the following accessories:



SWIVEL BASE

makes transfer easier, conveniently accessible release lever can be ordered for right or left rotation.



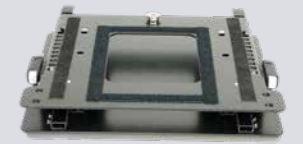
TILTING BASE

allows seat tilting in 4 stages (2.5°/5°/7.5°/10°) for a relaxed resting position.



TILTING BASE AND SWIVEL BASE

combined for the best possible handling and comfort



FOOTREST SUPPORT FITTING

with or without SEATFIX



FOOTREST

ensures a stable seating position, allowing the child to brace their feet firmly.



STAND FRONT, SEATFIX-ADAPTER OR STABILIZING BOW

ensure stable support of the seat in the car.



ABDUCTION BLOCK

(adjustable) improves leg control and prevents the legs from crossing.

A complete overview of accessories can be found on the online order form.

ACCESSORIES (SELECTION)



FOREHEAD SUPPORT
provides passive stabilization of the head.



TABLE, ANTERIOR
promotes the child's upright and stable posture, gives the child all-round support and security, position without losing support.



SEAT DEPTH EXTENSION
offers more leg support and individual adjustment for tall children.



CHIN REST
The adjustable chin rest stabilizes the head during lateral or forward movement.

Dimensions & Weights	RECARO AXION 1 Reha
Seat depth (behind crotch strap)	22 cm / 8.7"
Seat depth (behind front edge)	34 cm / 13.4"
Seat width	27 cm / 10.6"
Back height (seat inside)	75 cm / 29.5"
Shoulder height (harness guide)	34 - 54 cm / 13.4 - 21.3"
Shoulder width	35 cm / 13.8"
Distance between chest pads	19 - 28 cm / 7.5 - 11.0"
Seat tilt (base model)	2.5° / 5° / 7.5° / 10°
Overall dimensions (w x h x d)	52 x 63 x 39 cm / 20.5 x 24.8 x 15.4"
Weight of the seat	6 kg / 13.2 lbs
User height	100 - 150 cm / 39.4 - 59.1"
max. user weight	15 - 50 kg / 33.1 - 110.2 lbs

Basic equipment:

Seat and backrest with integrated headrest in various positions; Isofix connection; improved side impact protection system with energy-absorbing elements; removable additional head padding, lateral trunk supports, lateral seat upholstery, leg guides; 5-point harness; shoulder strap padding; harness shield padding; removable abduction guide; removable covers.



Watch the video:
How quickly and easily the RECARO AXION 1 Reha is installed in the car.



Rehab car seats from Thomashilfen: The right solution for every journey!



Axlkid ONE 3 Reha
61 - 125 cm
24.0" - 49.2"



AVOVA Sperling Reha
76 cm - 135 cm
29.9" - 53.1"



Axlkid NEXTKID Reha
100 cm - 150 cm
39.4" - 59.1"



Hercules Small
100 - 150 cm
39.4" - 59.1"



Hercules Prime R129
130 - 180 cm
51.2" - 70.9"

You can find the entire range of rehab car seats at www.thomashilfen.com

